

FMUSER INTERNATIONAL GROUP LIMITED

Fmuser
Integrity, Innovation, Impact

Energy Storage Solutions

广州市汉婷信息科技有限公司

For Customer Service Address: Room
305, Huilange BLDG, No. 273, Huangpu
Blvd W, Tianhe District, Guangzhou
510620, Guangdong, China



[Visit Here](#) for More Details

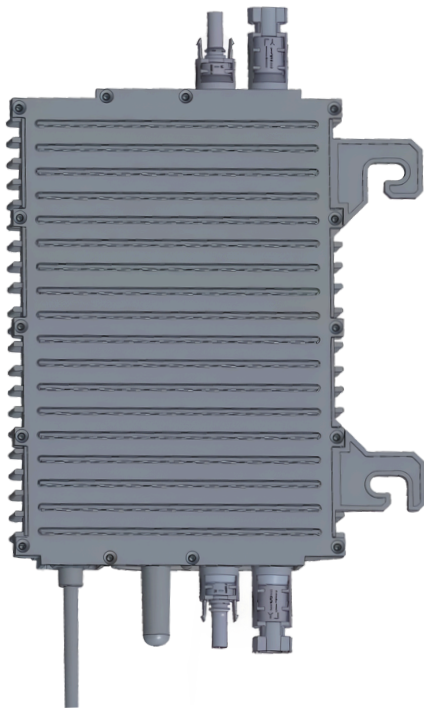
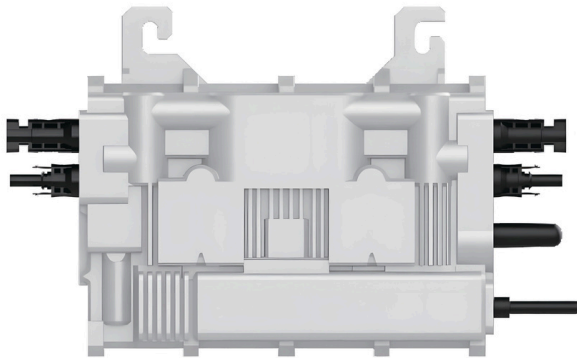




Microinverter

2-in-1
800W
1000W

Microinverters are crucial for maximizing solar energy efficiency by converting power from solar panels into usable electricity. With FMUSER, you enjoy reliable performance and easy installation, backed by premium quality and low failure rates. Our lightweight microinverters harness energy from individual solar panels, reducing reliance on traditional power sources. The FMUSER 2-in-1 microinverter connects up to 2 panels at once, optimizing PV production. We offer various output power options, and all our solar inverters include reactive power control, meeting EN 50549-1:2019, VDE-AR-N 4105:2018, UL 1741, and more.



Product Features

- Compact structure, light weight, ultra-high power density
- Faster, safer, and more flexible C-connection networking method
- Meets NB/T 32004 certification grid-connected regulations
- High reliability, 10+ year warranty
- One-to-two design, 2-way independent MPPT monitoring

Product Specifications

Model	MI800W		MI1000W	
INPUT CHARACTERISTICS (DC)				
Suitable for PV module power				
Input operating voltage	Minimum 16V, Typical 42V, Maximum 60V			
Starting voltage	Minimum 18V, Typical 19V, Maximum 20V			
MPPT voltage range	Minimum 16V, Typical 42V, Maximum 60V			
Maximum input current				
Maximum input short circuit current	2 x 22A			
MPPT quantity	2			
Maximum number of input channels	2			
OUTPUT CHARACTERISTICS (AC)				
	800VA		1000VA	
Output current adjustment range	Minimum value 0A, typical value 4.6A			
The output voltage	Minimum 189V	Typical value 220V		Maximum 264V
AC frequency range	47.5~51Hz			
Total Harmonic Distortion (THD)	Typical value <3%, maximum value <5%			
Power factor (adjustable)	> 0.99 default 0.9 leading ... 0.9 lagging			
EFFICIENCY				
Peak efficiency				
MPPT efficiency	99.8%			
SAFETY PROTECTION FUNCTION				
Protective function	Anti-islanding protection, input reverse connection protection, output over-frequency,protection, output over-current protection, output over-voltage protection			
ENVIRONMENTAL CHARACTERISTICS & MECHANICAL CHARACTERISTICS				
Operating temperature	-40 ~ +65℃			
Storage temperature	-40 ~ +85℃			
Waterproof level	IP67			
Cooling method	Natural cooling			
Nominal size	228 × 196.5 × 31.3mm			
Nominal Weight	2.38kg			
OTHER				
Communication method	Sub-1G			
Safety Certification	NB/T 32004: 2018			



Microinverter

600W
800W
1200W

1-in-1 (600W) / 2-in-1 (800W/1200W)



Product Features

- Compact structure, light weight, ultra-high power density
- Faster, safer, and more flexible C-connection networking method
- Meets NB/T 32004 certification grid-connected regulations
- High reliability, 10+ year warranty
- One-to-two design, independent MPPT monitoring

Product Specifications

System Interface Definition

PV IN1	PV IN2	Wireless communication	AC OUT
Solar cells (photovoltaic modules) enter the first channel	Solar cells (photovoltaic modules) enter the second channel	The inverter has wireless communication and the collector has WIFI communication	Inverter AC output

System Interface Model

PV sheet metal shell: MC4 DC 2 inputs	Micro Inverter AC out: 250 terminal	3-color LED light: Red: startup or standby status. Blue: first channel working. Green: second channel working
---------------------------------------	-------------------------------------	--

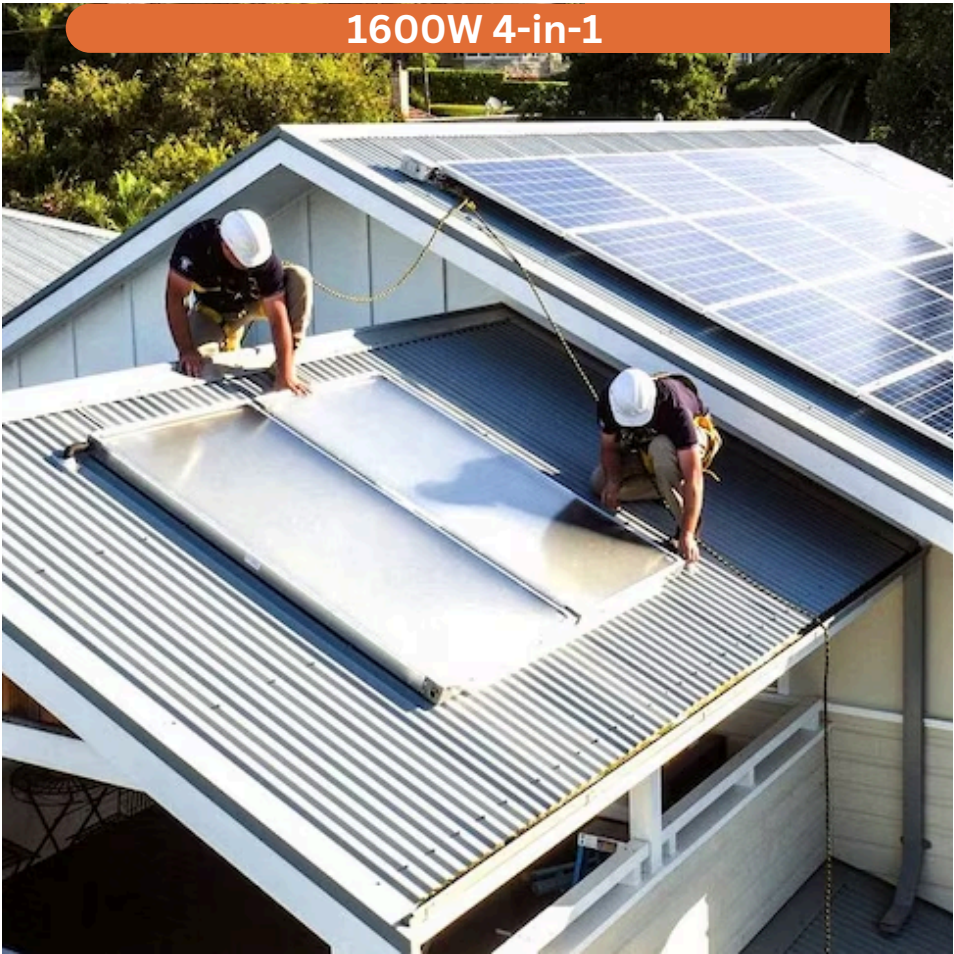
Microinverter Electrical Specifications

Adaptation Area	GLOBAL
Drag method	600W 1in1 / 800W 2in1 / 1200W 2in1
DC Input	
Commonly used module power (W)	250~540+
Start-up voltage (V)	22
MPPT voltage range (V)	25~45
Maximum input voltage (V)	60
Maximum input current (A)	2×17.5
Maximum input short-circuit current (A)	2×20.0
PV input method	Two inputs can be connected in parallel
AC output	
Rated output power (VA)	800
Rated output current (A)	3.482
Nominal output voltage (V)	230
Nominal output voltage range (V)	180~275
Nominal frequency/range (Hz)	50/45~55 or 60/55~65
Power factor	>0.99 default
Total harmonic distortion	< 3.0%
Efficiency	
CEC peak efficiency	97.1%
CEC weighted efficiency	96.8%
Nominal MPPT efficiency	99.8%
Nighttime power consumption (mW)	< 50



Microinverter

1600W
4-in-1



Product Features

- Compact structure, light weight, ultra-high power density
- Faster, safer, and more flexible C-connection networking method
- Meets NB/T 32004 certification grid-connected regulations
- High reliability, 10+ year warranty
- One-to-two design, independent MPPT monitoring

Product Specifications

System Interface Definition

PV IN1	PV IN2	Wireless communication	AC OUT
Solar cells (photovoltaic modules) enter the first channel	Solar cells (photovoltaic modules) enter the second channel	The inverter has wireless communication and the collector has WIFI communication	Inverter AC output

System Interface Model

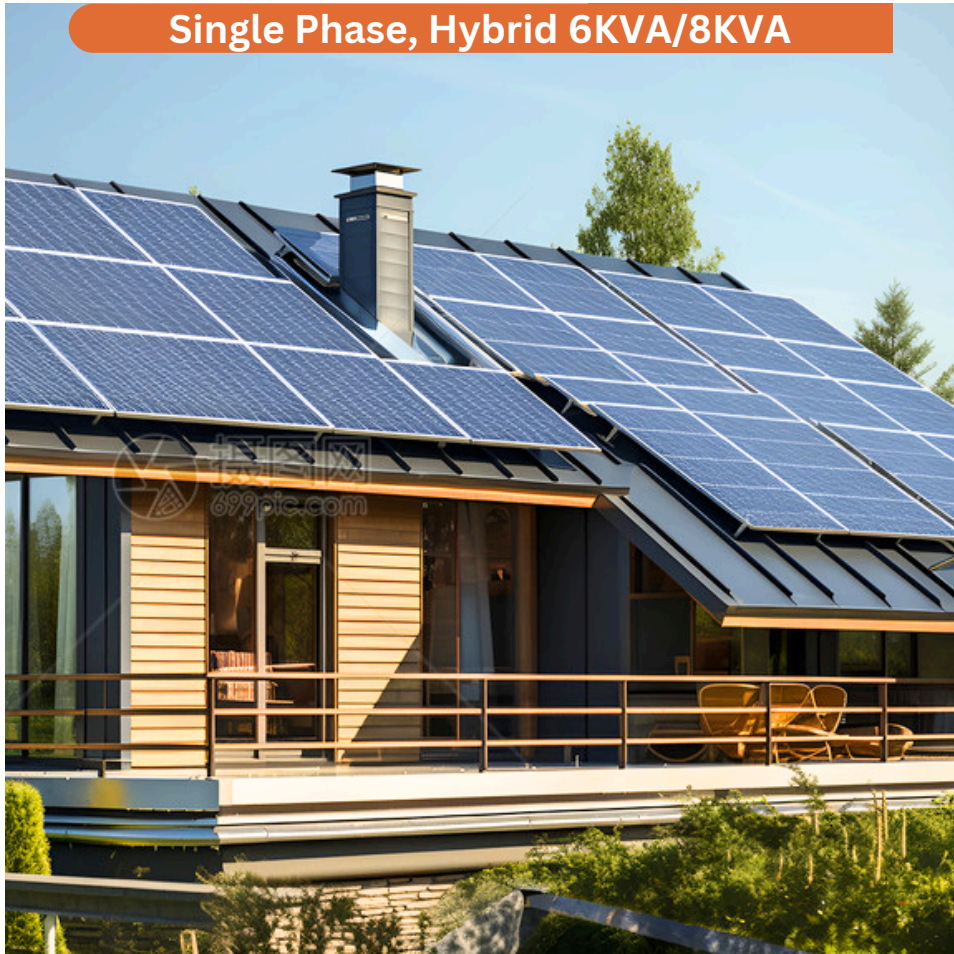
PV sheet metal shell: MC4 DC 4 inputs	Micro Inverter AC out: 250 terminal	3-color LED light: Red: startup or standby status. Blue: first channel working. Green: second channel working
---------------------------------------	-------------------------------------	---

Microinverter Electrical Specifications

Adaptation Area	GLOBAL
Drag method	1600W 4in1
DC Input	
Commonly used module power (W)	250~540+
Start-up voltage (V)	22
MPPT voltage range (V)	25~45
Maximum input voltage (V)	60
Maximum input current (A)	4×17.5
Maximum input short-circuit current (A)	4×20.0
PV input method	Two inputs can be connected in parallel
AC output	
Rated output power (VA)	1600
Rated output current (A)	3.482
Nominal output voltage (V)	230
Nominal output voltage range (V)	180~275
Nominal frequency/range (Hz)	50/45~55 or 60/55~65
Power factor	>0.99 default
Total harmonic distortion	< 3.0%
Efficiency	
CEC peak efficiency	97.1%
CEC weighted efficiency	96.8%
Nominal MPPT efficiency	99.8%
Nighttime power consumption (mW)	< 50

Hybrid Inverter

6KVA
8KVA



Single Phase, Hybrid 6KVA/8KVA

Product Features

- Smart touch LCD with IP65 protection level
- Hybrid on/off-grid energy storage solar system
- Supports up to 16 units in parallel
- Max charging/discharging current of 190A
- Compatible with energy storage from diesel generators



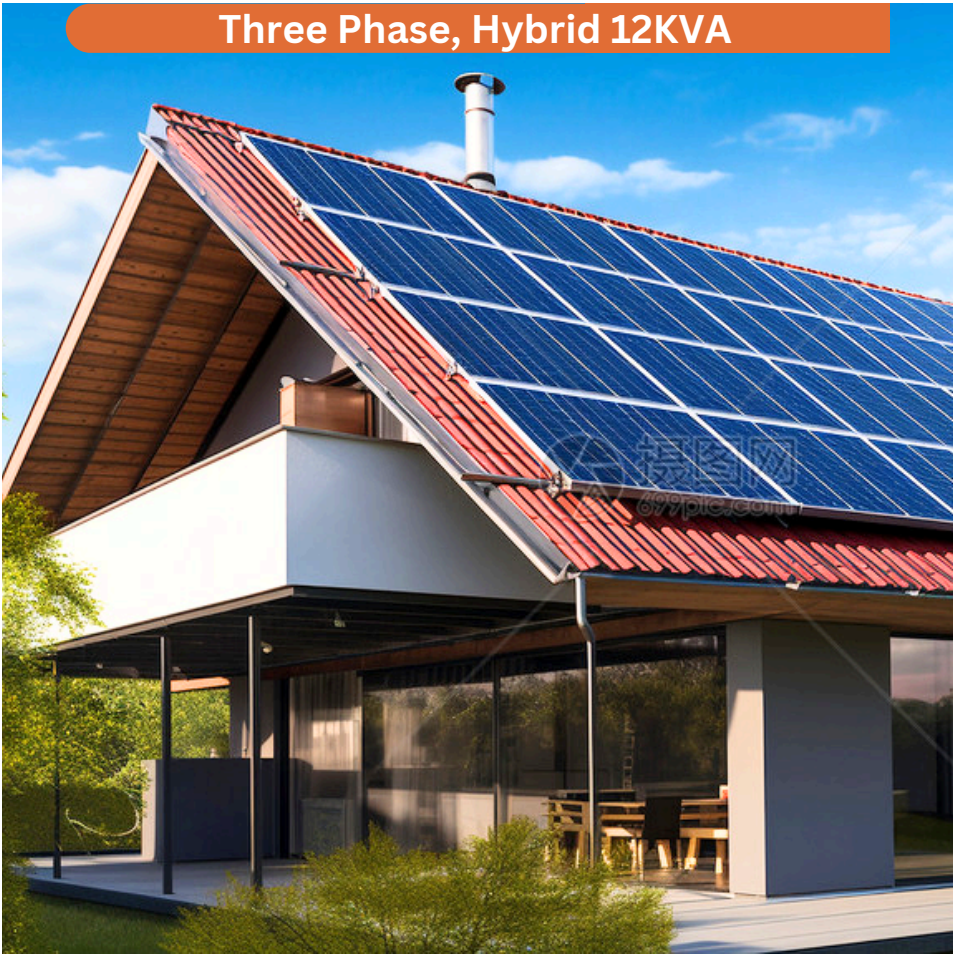
Product Specifications

Model	HB6000PLUS_SP	HB8000PLUS_SP
Battery input Data		
Battery Type	Lead-acid or Lithium-ion	
Battery Voltage Range (V)	40-60	
Max. Charging Current (A)	120	190
Max. Discharging Current (A)	120	190
Charging Strategy for Li-ion Battery	Self-adaption to BMS	
Number of Battery Input	1	
PV String Input Data		
Max. PV Input Power (W)	6500	10400
Max. PV Input Voltage (V)	500	
Start-up Voltage (V)	125	
MPPT Voltage Range (V)	150-425	
Rated PV Input Voltage (V)	370	
Max. Operating PV Input Current (A)	18+18	26+26
Max. Input Short-Circuit Current (A)	27+27	34+34
No. of MPP Trackers/ No. of Strings per MPP Tracker	2/1+1	2/2+2
AC Input/Output Data		
Rated AC Input/Output Active Power(W)	6000	8000
Max. AC Input/Output Apparent Power(VA)	6500	8800
Rated AC Input/Output Current (A)	22.8/21.8	36.4/34.8
Max. AC Input/Output Current(A)	25/24	40/38.3
Max. Continuous AC Passthrough (grid to load) (A)	35	50
Peak Power (off-grid)(W)	2 times of rated power, 10s	
Power Factor Adjustment Range	0.8 leading to 0.8 lagging	
Rated Input/Output Voltage/Range (V)	220/230 0.85Un-1.1Un	
Rated Input/Output Grid Frequency/Range(Hz)	50/45-55 60/55-65	
Grid Connection Form	L+N+PE	
Total Current Harmonic Distortion THDi	<3% (of nominal power)	
DC Injection Current	<0.5% In	
Efficiency		
Max. Efficiency	97.6%	
Euro Efficiency	96.5%	
MPPT Efficiency	>99%	
Equipment Protection		
Integrated	DC Polarity Reverse Connection Protection, AC Output Overcurrent Protection AC Output Overvoltage Protection, AC Output Short Circuit Protection, Thermal Protection DC Terminal Insulation Impedance Monitoring, DC Component Monitoring, Ground Fault Current Monitoring Power Network Monitoring, Island Protection Monitoring, Earth Fault Detection, DC Input Switch Overvoltage Load Drop Protection, Residual Current (RCD) Detection, Surge protection level	
Surge Protection Level	TYPE II(DC), TYPE II(AC)	
Interface		
Communication Interface	RS485/RS232/CAN	
Monitor Mode	GPRS/WIFI/Bluetooth/4G/LAN(optional)	
General Data		
Operating Temperature Range (℃)	-40 to +60℃, >45℃ Derating	
Permissible Ambient Humidity	0-100%	
Permissible Altitude	2000m	
Noise(dB)	<30	
Ingress Protection(IP) Rating	IP 65	
Inverter Topology	Non-Isolated	
Over Voltage Category	OVC II(DC), OVC III(AC)	
Cabinet Size (WxHxD mm)	366×589.5×237(Excluding Connectors and Brackets)	
Weight (kg)	26.8	
Type of Cooling	Intelligent Air Cooling	
Warranty	5 Years the Warranty Period Depends the Final Installation Site of Inverter, More Info Please Refer to Warranty Policy	
Grid Regulation	IEC 61727, IEC 62116, CEI 0-21, EN 50549, NRS 097, RD 140, UNE 217002, OVE-Richtlinie R25, G99, VDE-AR-N 4105	
Safety / EMC Standard	IEC/EN 61000-6-1/2/3/4, IEC/EN 62109-1, IEC/EN 62109-2	



Hybrid Inverter

12KVA



Product Features

- Hybrid on/off-grid energy storage solar system
- Supports up to 10 units in parallel for both operations; multiple batteries can be connected
- Max charging/discharging current of 240A
- 48V low voltage battery, safe for household use
- Compatible with energy storage from diesel generators



Product Specifications

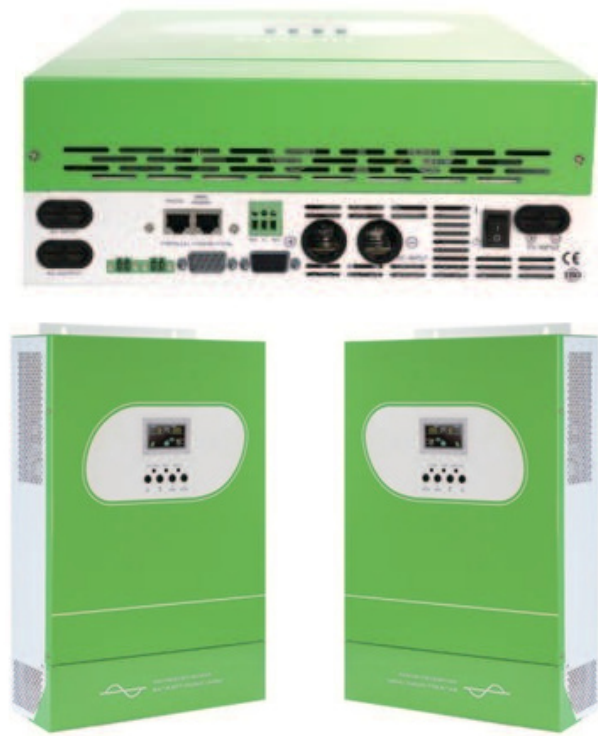
Model	HB12000PLUS_3LP
Battery input Data	
Battery Type	Lead-acid or Lithium-ion
Battery Voltage Range (V)	40-60
Max. Charging Current (A)	240
Max. Discharging Current (A)	240
Charging Strategy for Li-ion Battery	Self-adaption to BMS
Number of Battery Input	1
Max. PV Input Power (W)	18000
Max. PV Input Voltage (V)	800
Start-up Voltage (V)	160
MPPT Voltage Range (V)	200-650
Rated PV Input Voltage (V)	550
Max. Operating PV Input Current (A)	20+20
Max. Input Short-Circuit Current (A)	30+30
No. of MPP Trackers/ No. of Strings MPP Tracker	2/1+1
Rated AC Input/Output Active Power (W)	12000
Max. AC Input/Output Apparent Power (VA)	13200
Rated AC Input/Output Current (A)	18.2/17.4
Max. AC Input/Output Current (A)	20/19.2
Max. Continuous AC Passthrough (grid to load) (A)	45
Peak Power (off-grid) (W)	2 times of rated power, 10s
Power Factor Adjustment Range	0.8 leading to 0.8 lagging
Rated Input/Output Voltage/Range (V)	220/380V, 230/400V 0.85Un-1.1Un
Rated Input/Output Grid Frequency/Range(Hz)	50/45-55, 60/55-65
Grid Connection Form	3L+N+PE
Total Current Harmonic Distortion THDi	<3% (of nominal power)
DC Injection Current	<0.5% In
Efficiency	
Max. Efficiency	97.6%
Euro Efficiency	97.0%
MPPT Efficiency	>99%
Equipment Protection	
Integrated	DC Polarity Reverse Connection Protection, AC Output Overcurrent Protection AC Output Overvoltage Protection, AC Output Short Circuit Protection, Thermal Protection DC Terminal Insulation Impedance Monitoring, DC Component Monitoring, Ground Fault Current Monitoring Power Network Monitoring, Island Protection Monitoring, Earth Fault Detection, DC Input Switch Overvoltage Load Drop Protection, Residual Current (RCD) Detection, Surge protection level
Surge Protection Level	TYPE II(DC), TYPE II(AC)
Interface	
Communication Interface	RS485/RS232/CAN
Monitor Mode	GPRS/WIFI/Bluetooth/4G/LAN(optional)
General Data	
Operating Temperature Range (°C)	-40 to +60°C, >45°C Derating
Permissible Ambient Humidity	0-100%
Permissible Altitude	3000m
Noise(dB)	≤55
Ingress Protection(IP) Rating	IP 65
Inverter Topology	Non-Isolated
Over Voltage Category	OVC II(DC), OVC III(AC)
Cabinet Size (WxHxD mm)	386×660×250(Excluding Connectors and Brackets)
Weight (kg)	35.2
Type of Cooling	Intelligent Air Cooling
Warranty	5 Years the Warranty Period Depends the Final Installation Site of Inverter, More Info Please Refer to Warranty Policy
Grid Regulation	IEC 61727, IEC 62116, CEI 0-21, EN 50549, NRS 097, RD 140, UNE 217002, OVE-Richtlinie R25, G99, VDE-AR-N 4105
Safety / EMC Standard	IEC/EN 61000-6-1/2/3/4, IEC/EN 62109-1, IEC/EN 62109-2



ENERGY STORAGE INVERTER

Product Features

- Lithium battery auto-restart function for convenient charging
- Intelligent power supply mode for smart distribution of solar panel, mains, and battery power
- Adjustable utility and PV charging voltages to match different battery requirements
- Slim design for easy installation and transportation
- Battery reverse connection protection with fuse switch for safer installation
- PF1.0 for high efficiency, energy conservation, and cost savings
- Supports operation without a battery to reduce solar system costs
- Parallel function supports up to 9 units for increased load capacity
- High precision output voltage (+5%) to protect your appliances
- Communication option: external Wi-Fi for remote supervision
- BMS function for lithium battery management



Product Specifications

Model	HB3000HF	HB5500HF	HB8000HF	HB10000HF
Input Formation	L+N+PE			
AC input	220/230/240VAC			
input Voitage Range	90-280VAC±3V(Normal Mode)185-264VAC±3V (UPS Mode)			
frequency	50/60Hz(Adaptive)			
Rated Power	3000W	5500W	8000W	10000W
Output voltage	208/220/230/240VAC+5%			
Output Frequency	50/60Hz*0.1%			
Output Wave	Pure Sine Wave			
Transfer Time(Adjustable)	10ms for Computer Equipment.20ms for Household Equipment			
Peak Power	6000VA	11000VA	16000VA	20000VA
Overload Ability	Battery Mode : 21s@102%-110% lo0d 10s@t0%-130% lo0d 3s@130% -150% load 400ms • 150% lo0d			
Peak Efficiency(Battery Model)	>94%			
Rated Voltage	24VDC	48VDC		
Constant Charging voitage	28.2VDC	56.4vdc		
float Charging Voitage	27VDC	54VDC		
py Charging Method	MPPT	MPPT	MPPT	Double MPPT
Max PV input	4000W	5500W	8000W	2*5500W
MPPr Tracking Range	120-500VDC	120-500VDC	120-500VDC	120-500VDC
MAx PV Input Voltage	500VDC	500VDC	500VDC	500VDC
MAX PV Charge Curent	100A	100A	100A	160A
MAX AC Charge Current	60A	60A	60A	120A
MAx Charge Current	100A	100A	100A	160A
LCD	Can dispiay operating mode/ioad/input/output			
RS232	5PIN/Pitch2.54mm Baud Rate 2400			
Expansion Siot	Lithium Battery BMS Communication Card.WIFI 2*5PIN/Pitch2.54mm			
Parallel interface	Not Support Parallel	Support Parallel	Not Support Parallel	Not Support Parallel
Operating Temperature	0°C-40°C			
Storage Temperature	15°C-60°C			
Ork Aititude	No more than 1000m. It 1000m< Rate power will lower. MAX 4000m.Reter			
Operating Environment Humidity	Non Condensing			
Noise	«50dB			



Solar Controller

MPPT
Charge

The FMUSER MPPT Solar Charge Controller gathers energy from your solar panels and stores it in your batteries. Using the latest, fastest technology, this device maximizes this energy harvest, driving it intelligently to achieve full charge in the shortest possible time. smart design maintains battery health, extending its life.

Product Features

- MPPT technology for optimized power output
- Built-in overcharge and over-discharge protection
- 30A Load Controller for larger loads (ReadyShunt and ReadyRelay compatible)
- Lithium Battery compatibility (BMS ReadyBlock optional)
- User-friendly LCD interface
- Remote monitoring



Product Specifications

Product Model	MPZ40	MPZ60
Rated charging current	30A/40A	50A/60A
Rated discharge current	20A	40A
Product size	168x248x94mm	188x280x94mm
QTY/Carton	6PCS	5PCS
Packing Weight	14KG	15KG
Outer Packing Size	685x320x325mm	810x350x265mm
Outer Box Volume	0.07cbm	0.08cbm
Product Weight (KG)	<div>MPZ40</div> 	<div>MPZ60</div> 

Product Specifications

Image	Product Model	MPK40
	Rated charging current	30A/40A
	Rated discharge current	15A/20A
	Product size	220*200*83mm
	QTY/Carton	8PCS
	Packing Weight	23KG
	Outer Packing Size	590*480*300mm
	Outer Box Volume	0.08cbm
Image	Product Model	MPK60
	Rated charging current	50A/60A
	Rated discharge current	25A/30A
	Product size	265*220*88mm
	QTY/Carton	4PCS
	Packing Weight	15KG
	Outer Packing Size	510*340*320mm
	Outer Box Volume	0.06cbm
Image	Product Model	MPK80
	Rated charging current	80A/100A
	Rated discharge current	40A
	Product size	340*240*108mm
	QTY/Carton	4PCS
	Packing Weight	18.5KG
	Outer Packing Size	565*435*375mm
	Outer Box Volume	0.09cbm



Pure Sine Wave Inverter

1200WF
~
3000WF

Welcome to FMUSER's extensive range of pure sine power inverters. Compared to modified sine inverters, pure sine inverters offer unique advantages, producing smooth, even waves instead of the blocky waves typical of modified sine inverters. This results in a cleaner, more efficient performance. Pure sine inverters are safer and recommended for powering sensitive electronics, making them suitable for complex devices like circuit boards, medical equipment, microwaves, and more.

GA3000VA~10000VA



Product Features

- Pure sine wave output as utility for home use.
- InverterConnect app for mobile phone control.
- Smart LCD display.
- Plastic cover for safer protection.
- Multiple protections: overload, low voltage, over voltage, temperature, and short circuit.
- Lightweight and portable for home use or outdoor camping.



Product Specifications

Model	GOC1200WF	GOC1500WF	GOC2000WF	GOC2500WF	GOC3000WF
Rated output power	1200W	1500W	2000W	2500W	3000W
Surge power	2400W	3000W	4000W	5000W	6000W
Power protection Rated input voltage	1300W+100W	1600W±100W	2100W+100W	2600W±100W	3100W±100W
Input voltage range	12VDC/24VDC				
Output voltage range	9.5-16VDC/19-32VDC				
Idle Load	120VAC±10%/220VAC+10%				
Frequency	≤1A				
Waveform	50/60Hz±3HZ				
Over load protection recovery	Pure sine wave				
Short circuit protection recovery	YES				
Low volatage alarm	YES				
Low volatage protection	10±0.5V/20±1V				
Low voltage protection recovery	9.5±0.5V/19±1V				
Over voltage protection	12.5±0.5V/25±1V				
Over voltage protection recovery USB output voltage	16±0.5V//32±1V				
USB output max current	14±0.5V/28±1V				
Control Mode	5±0.2V				
Buzzer working status	3.4A				
Fan working status	wifi(APP)+Wire control / wire control				
LED indicates working status	Intermittent beeping indicates "battery low voltage" reminder Three consecutive beeps indicate that the "protection" machine has entered the protection state and has no voltage output.				
Working status display	The temperature >45℃ The fan starts running The temperature < 42℃ The fan stops running.				
Net weight/box(Kg):	Green light 1 "USB power indicator Green light 2 "Power on indicator light"The red light "fault light"lights up and the machine enters the protection state with no voltage output.				
Gross weight/box(Kg):	Normal display: battery status, battery voltage, output frequency,output voltage,output waveform Reminder display:The battery status grid flashes to indicate "battery low voltage"				
Net weight per carton(Kg):	2.78	3.41	3.59	4.75	5.25
Gross weight per carton(Kg):	3.75	4.41	4.68	5.92	6.53
Product size(mm):	22.5	17.64	18.72	11.84	13.06
Outer Packing size (mm)	24.11	19.09	20.17	12.7	13.92
Qty/Carton:	6pcs/carton	4pcs/carton	4pcs/carton	2pcs/carton	2pcs/carton

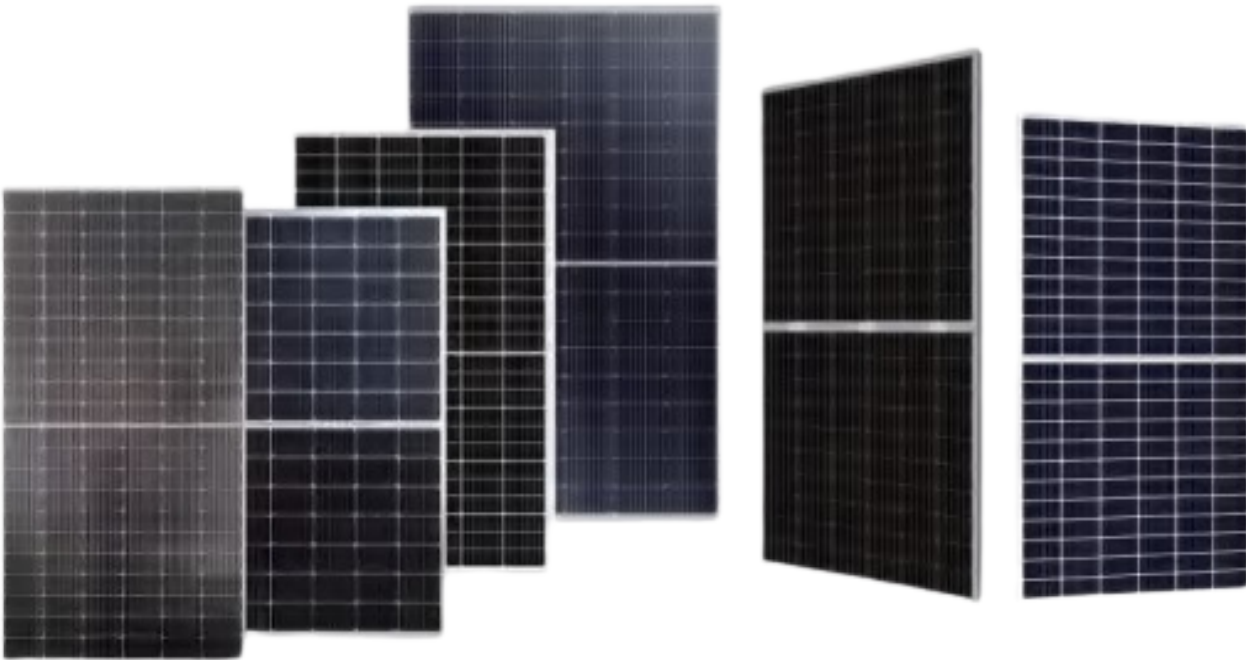


SOLAR PANEL

MONO
SERIES




Monocrystalline photovoltaic technology offers long-lasting, proven performance in solar panels. These modules are typically the most efficient at converting sunlight into electricity, achieving energy conversion rates of up to 24%, compared to 18% for polycrystalline and 13% for thin-film panels. This efficiency means more power per square foot, although monocrystalline panels tend to be more expensive. They are often identified by their black or iridescent blue color. FMUSER partners with top brands to provide monocrystalline solar panels at competitive prices.

Product Features






- Using silicon wafers from leading PV brands for more stable half-cut PV modules with high conversion efficiency of >22%.
- Complete product specifications for a one-stop solution.

Product Specifications

Product Model	DX MC50W	DX MC150W	DX MC300W
Custom Development	Different power solarmodules can be customized and developed, MOO 200PCS		
Peak Power	50W	150W	300W
Working Voltage (V)	18V	20V	24V
Working Current(A)	2.8A	7.5A	12.5A
Working Temperature (°C)	-10°C~70°C	-10°C~70°C	-10°C~70°C
Solar EnergyConversion Efficiency	≥22%	≥22%	≥22%
Product Size (MM)	500*580*35mm	970*770*35mm	1365*1134*35mm
Product Weight (KG)			

Product Specifications

Product Model	DX MC50W	DX MC150W	DX MC300W
Custom Development	Different power solarmodules can be customized and developed, MOO 200PCS		
Peak Power	50W	150W	300W
Working Voltage (V)	18V	20V	24V
Working Current(A)	2.8A	7.5A	12.5A
Working Temperature (°C)	-10°C~70°C	-10°C~70°C	-10°C~70°C
Solar EnergyConversion Efficiency	≥22%	≥22%	≥22%
Product Size (MM)	500*580*35mm	970*770*35mm	1365*1134*35mm
Product Weight (KG)			



LiFePO4 BATTERY

48V
RACK

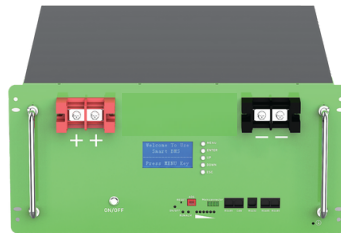
These batteries boast a proprietary lithium iron phosphate chemistry that takes the hassle out of maintaining and utilizing the power you need. They are not only extremely efficient for home applications or backup power for your workplace, but they also perform extraordinarily well in off-grid or outdoor applications where trust, safety, and environmental temperature matter most. This makes them the perfect choice for planned storage in temperatures above 32°F, as well as for use with solar controllers and temperature sensors that support low-temperature cut-off.



48100RLB / 48200RLB

Product Features

- High-quality lithium iron phosphate battery.
- More than 3500 deep cycle charge and discharge cycles.
- Super long warranty: 5-year warranty.
- Large capacity in a compact volume for household use.
- High level of safety with built-in BMS protection.
- Supports connection of up to 15 units in parallel mode for expansion.



Product Specifications

MODE	DX-48100RLB	DX-48200RLB
Total Capacity	5.12KWH	10.24KWH
Nominal Voltage	51.2V	51.2V
Voltage Range	43.2~58.4Vdc	43.2~58.4Vdc
MAX. Charge & Discharge Current	100A	200A
Recommend Charge & Discharge Current	≤50A	≤100A
MAX.Output Power	5120W	10240W
Recommend Output Power	2500W	5000W
DOD	0.9	0.9
Scalability	Up to 15 units in parallel	Up to 15 units in parallel
Communication	CAN&RS485&RS232	CAN&RS485&RS232
Ingress Protection	IP21	IP21
Cycle Life	≥3500@25°C 80%DOD	≥3500@25°C 80%DOD
Working Temperature Range	-20°C to 60°C @60 ±25% Relative Humidity	-20°C to 60°C @60 ±25% Relative Humidity
Design Life(Years)	20	20
Net Weight(KG)	40KG	88KG
Gross Weight(KG)	43KG	92KG
Product Dimension(MM)	460*442*177MM	520*442*221MM
Package Dimension(MM)	560*520*240MM	620*520*300MM

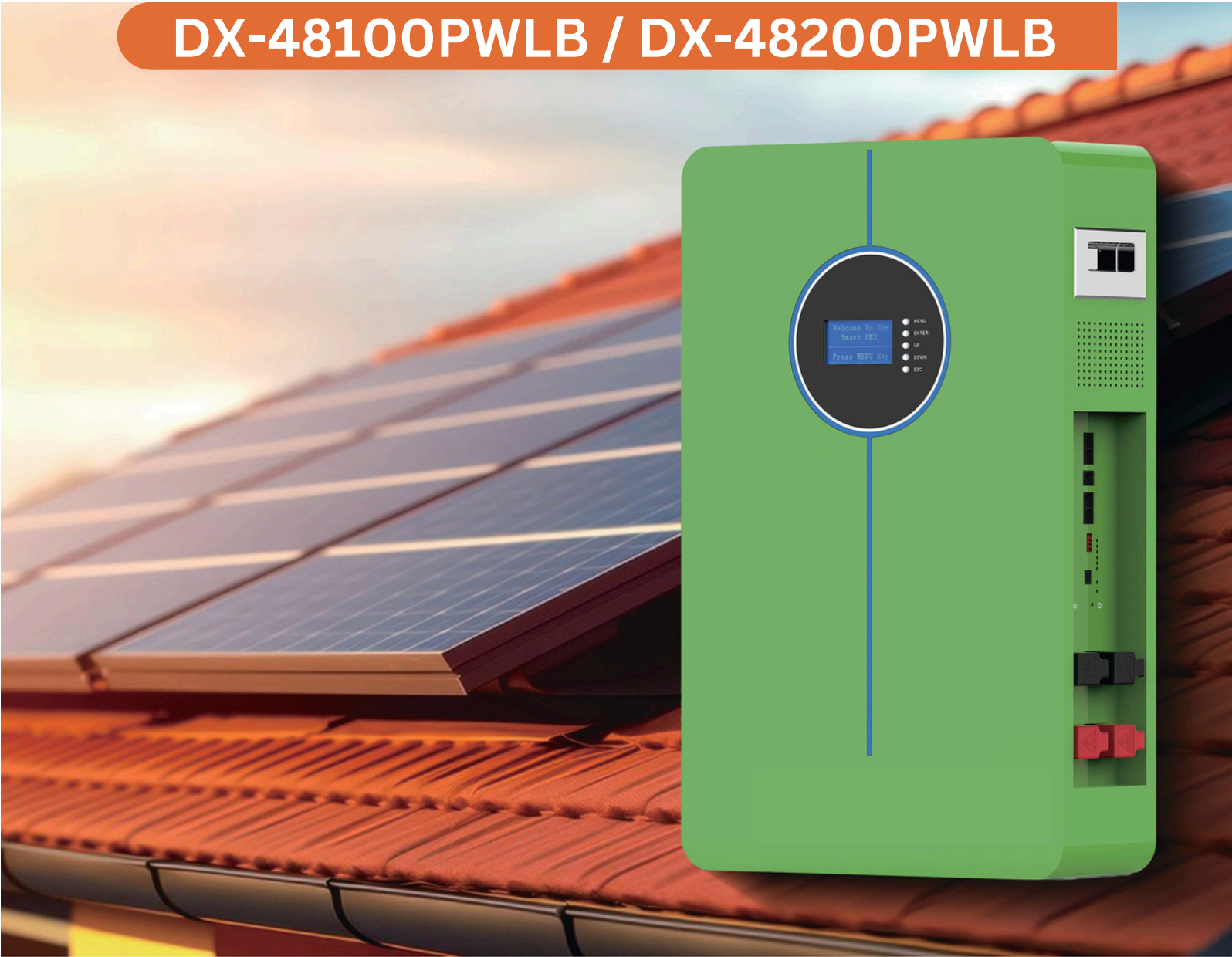


LiFePO4 BATTERY

POWER WALL

These batteries boast a proprietary lithium iron phosphate chemistry that takes the hassle out of maintaining and utilizing the power you need. They are not only extremely efficient for home applications or backup power for your workplace, but they also perform extraordinarily well in off-grid or outdoor applications where trust, safety, and environmental temperature matter most. This makes them the perfect choice for planned storage in temperatures above 32°F, as well as for use with solar controllers and temperature sensors that support low-temperature cut-off.

DX-48100PWL B / DX-48200PWL B



Product Features

- High-quality lithium iron phosphate battery.
- More than 3500 deep cycle charge and discharge cycle
- Super long warranty: 5-year warranty.
- Large capacity in a compact volume for household use.
- High level of safety with built-in BMS protection.
- Supports connection of up to 15 units in parallel mode for expansion.



Product Specifications

MODEL	DX-24200PWL B	DX-48100PWL B	DX-48200PWL B
Total Capacity	5.12KWH	5.12KWH	10.24KWH
Nominal Voltage	25.6V	51.2V	51.2V
Voltage Range	20~29.2Vdc	43.2~58.4Vdc	43.2~58.4Vdc
MAX. Charge & Discharge Current	100A	100A	200A
Recommend Charge & Discharge Current	≤50A	≤50A	≤100A
MAX.Output Power	2560W	5120W	10240W
Recommend Output Power	2500W	2500W	5000W
DOD	90%	90%	90%
Scalability	Up to 15 units in parallel	Up to 15 units in parallel	Up to 15 units in parallel
Communication	CAN&RS485&RS232	CAN&RS485&RS232	CAN&RS485&RS232
Ingress Protection	IP21	IP21	IP21
Cycle Life	≥3500@25°C 80%DOD	≥3500@25°C 80%DOD	≥3500@25°C
Working Temperature Range	-20°C to 60°C @60 ±25% Relative Humidity	-20°C to 60°C @60 ±25% Relative Humidity	-20°C to 60°C @60±25% Relative Humidity
Design Life(Years)	20	20	20
Net Weight(KG)	46KG	45KG	90KG
Gross Weight(KG)	48KG	48KG	96KG
Product Dimension(MM)	650*520*290MM	650*400*180MM	750*520*290MM
Package Dimension(MM)	710*580*350MM	710*460*240MM	810*580*350MM



Lithium Battery

12
VOLT
SERIES

These batteries boast a proprietary lithium iron phosphate chemistry that takes the hassle out of maintaining and utilizing the power you need. They are not only extremely efficient for home applications or backup power for your workplace, but they also perform extraordinarily well in off-grid or outdoor applications where trust, safety, and environmental temperature matter most. This makes them the perfect choice for planned storage in temperatures above 32°F, as well as for use with solar controllers and temperature sensors that support low-temperature cut-off.

Product Features



- High-quality lithium iron phosphate battery with deep cycle charge and discharge capabilities.
- Super long warranty: 5-year warranty.
- Large capacity with a small volume, suitable for household use.
- High safety standards with built-in BMS protection.
- Supports connection of up to 4 units in parallel and series mode for expansion.

Product Specifications

MODEL	DX-1265LB	DX-1280LB	DX-12100LB	DX-12200LB	DX-12300LB
Total Capacity	0.83KWH	1.024KWH	1.28KWH	2.56KWH	3.84KWH
Nominal Voltage	12.8V	12.8V	12.8V	12.8V	12.8V
Voltage Range	10~14.6Vdc	10~14.6Vdc	10~14.6Vdc	10~14.6Vdc	10~14.6Vdc
MAX. Charge Current	52A	64	80A	160	240
MAX. Discharge Current	65A	A	100A	A	A
Recommend Charge & Discharge Current	≤10A	80 ≤10A A	≤20A	200 ≤40A A	300 ≤40A A
MAX.Output Power	832W	1024W	1280W	2560W	3840W
Recommend Output Power	128W	128W	256W	512W	512W
DOD	90%	90%	90%	90%	90%
Scalability	Up to 4 units in parallel and in series	Up to 4 units in parallel and in series	Up to 4 units in parallel and in series	Up to 4 units in parallel and in series	Up to 4 units in parallel and in series
Communication(Optional)	Bluetooth	Bluetooth	Bluetooth	Bluetooth	Bluetooth
Ingress Protection	IP21	IP21	IP21	IP21	IP21
Cycle Life	≥3500@25°C 80%DOD	≥3500@25°C 80%DOD	≥3500@25°C 80%DOD	≥3500@25°C 80%DOD	≥3500@25°C 80%DOD
Working Temperature Range	-20°C to 60°C @60±25% Relative Humidity	-20°C to 60°C @60±25% Relative Humidity	-20°C to 60°C @60±25% Relative Humidity	-20°C to 60°C @60±25% Relative Humidity	-20°C to 60°C @60±25% Relative Humidity
Design Life(Years)	20	20	20	20	20
Net Weight(KG)	6KG	7KG	11KG	25.5KG	27KG
Gross Weight(KG)	7KG	8KG	12.5KG	28KG	30KG
Product Dimension(MM)	229*138*208MM	229*138*208MM	330*173*220MM	520*240*220MM	520*269*220MM
Package Dimension(MM)	305*230*290MM	305*230*290MM	405*265*300MM	595*330*300MM	595*360*300MM

We Also Provide...

SOLUTIONS

- Design and Consulting Solutions
- Engineering Outsourcing and Maintenance Services
- Internet-free Hospitality IPTV Solutions
- Hospitality TV Sets Solution
- Broadcasting Equipment for FM, AM, and TV stations
- Turnkey Radio Studio Solutions
- Fiber Optic Products & Solutions
- Control Room Consoles & Desks Solutions
- Digital TV Headend Solution
- Public Address and Audio-Visual Distribution Solutions
- Integrated Audio & Video Solutions
- Fire Detection and Alarm Solutions

Design and Consulting Solutions

We provide tailored design and consulting services to optimize your broadcasting and IPTV setups, ensuring efficient and effective system integration.



Engineering Outsourcing Services

Our expert team offers engineering outsourcing and maintenance support for various projects, helping you maintain operational efficiency and reliability in broadcasting and control room environments.



LAN-based IPTV Solution

We deliver customized IPTV solutions Catering to various sectors such as hotels, cruise ships, restaurants, ISP communities, fitness, government, transportation, enterprises, education, prisons, and hospitals.



Smart Door Lock Solutions

We offer smart door lock solutions that enhance security and convenience with keyless entry and remote access, seamlessly integrating with your smart home.



PA System & Audio-Visual Solution

We deliver integrated systems for public address and audio-visual distribution, facilitating effective communication in various settings.



FM, AM, TV Station Equipment

We offer complete broadcasting solutions, including high-quality equipment and systems designed for FM, AM, and TV stations to meet your diverse broadcasting needs.



Digital TV Headend Solution

Our comprehensive digital TV headend solutions ensure high-quality signal processing and distribution for your digital broadcasting needs.



AI-based Smart Hotel Solution

We provide smart hotel solutions that elevate guest experience and streamline operations. With keyless entry, mobile check-in, and integrated management systems, our technology ensures a seamless stay for every guest.



Turnkey Radio Studio Solutions

Our all-in-one turnkey radio studio setups include design, equipment, and installation, allowing you to start your broadcasting operations quickly and effectively.



Control Room Consoles & Desks

We design customized control room consoles and desk solutions that enhance workflow and efficiency in your broadcasting environments.



Integrated Audio & Video System

Our cohesive audio and video systems are designed for seamless integration in your broadcasting and production environments.

Contact Info



FMUSER Broadcast

- Web: www.fmradiobroadcast.com
- Email: sales@fmuser.com
- Phone: [\(+86\) 139-2270-2227](tel:+8613922702227)
- WhatsApp: [Contact us Today](#)
- Address: Room 305, Huilange BLDG, No. 273, Huangpu Blvd W, Tianhe District, Guangzhou 510620, Guangdong, China. [Visit in Google Map>>](#)

Follow Us



Quality is the priority
Of what we do in our
business through the
process.

Legal notice

©2024 FMUSER. All rights reserved.

You may utilize this presentation for private or internal purposes; however, any copyright or other proprietary notices must remain intact. Modification or creation of derivative works based on this presentation, as well as its use for commercial or public purposes, is strictly prohibited without prior written consent from FMUSER.

The information and opinions presented herein are valid as of the date of the presentation and may be subject to change. While the data has been sourced from reliable references, FMUSER does not guarantee its accuracy, completeness, or timeliness. Any liability for the accuracy and completeness of the information or for any damages or losses resulting from its use is expressly excluded.



Think Local, Act Global



fmuser